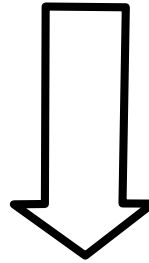


MY WEATHER STATION

TODAY IS



RAINOMETER
(rain-gauge)



TEMPERATURE

BOILING

HOT

WARM

MILD

COOL

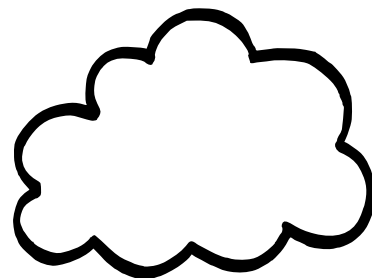
COLD

FREEZING

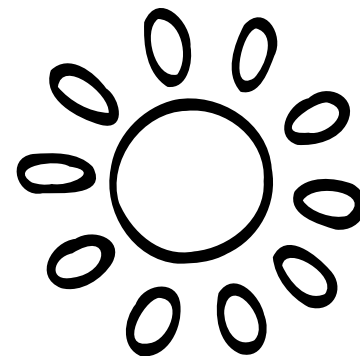
SNOWY



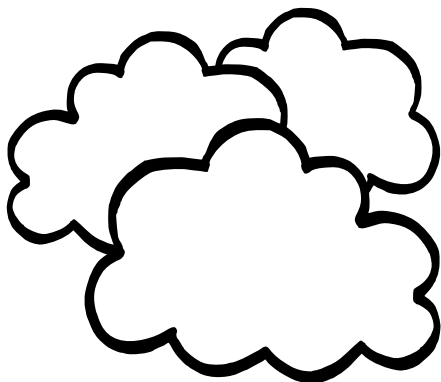
CLOUDY



SUNNY



FOGGY



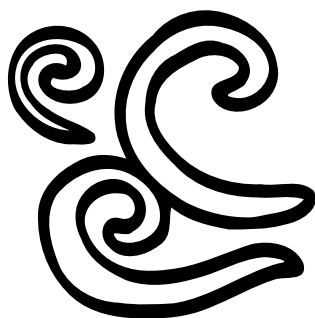
RAINY



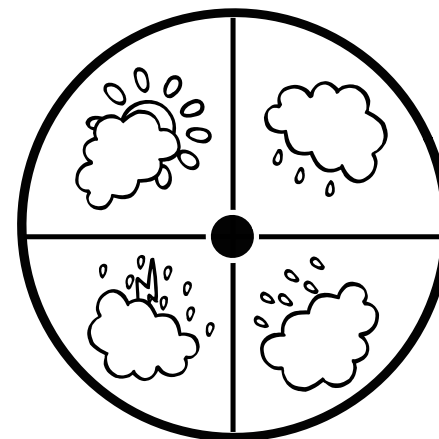
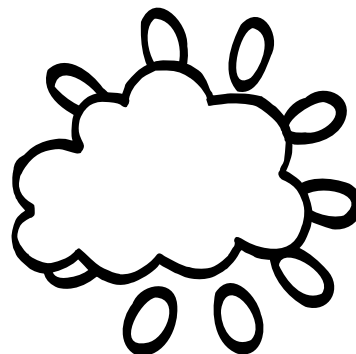
STORMY



WINDY

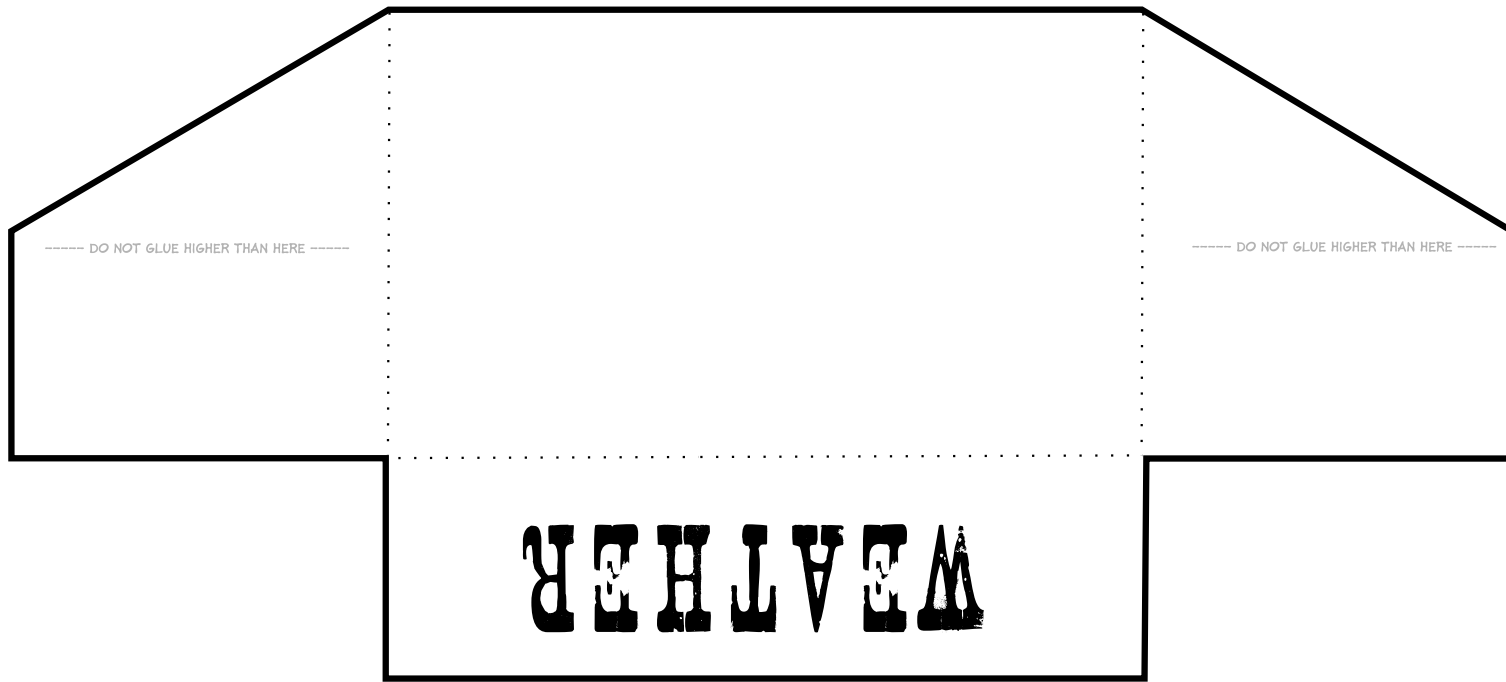


**PARTLY
CLOUDY**



Colour all these in and cut them out to use
on your weather station!

ENVELOPE FOR MY WEATHER CARDS



1. Cut around the thick black line along the outer edge.
2. Flip it over and crease and fold along the dotted lines.
3. Fold over the two sides on the left and right.
4. Fold up the bottom piece so you can see the word "Weather".
5. Glue the flaps in place so the envelope will hold your weather cards.
6. Colour in the envelope and then glue it to your weather station.

