

Hibernation



When the weather starts to get chilly, people will go inside their warm homes or put on jackets. What do animals do during winter?

Some animals go into a very deep sleep called **hibernation**. They live off their fat and eat little or no food.



Bears, frogs, chipmunks and even some insects hibernate.

Name: _____

Hibernation Facts

Directions: Fill in the blanks. Look for the correct answer inside the box below.

1. Some animals hibernate during _____.
2. Animals that hibernate can't find enough _____ during the cold long winter.
3. Hibernation is like a deep _____.
4. Frogs or turtles will go to the bottom of the _____ or _____ to hibernate.
5. During hibernation, an animal's _____ is slower.
6. During hibernation, an animal's _____ slows down.
7. Some hibernating animals eat lots of food before they hibernate. They can live off their stored fat and don't have to _____.

breathing

pond

eat

sleep

winter

food

lake

heartbeat

Name: _____

What Animals Hibernate During Winter?

Directions: Circle the correct answer.

bird

turtle

bear

kangaroo

gopher

seal

mouse

tiger

skunk

rabbit

toad

squirrel

snake

shark

badger

raccoon

crocodile

fox

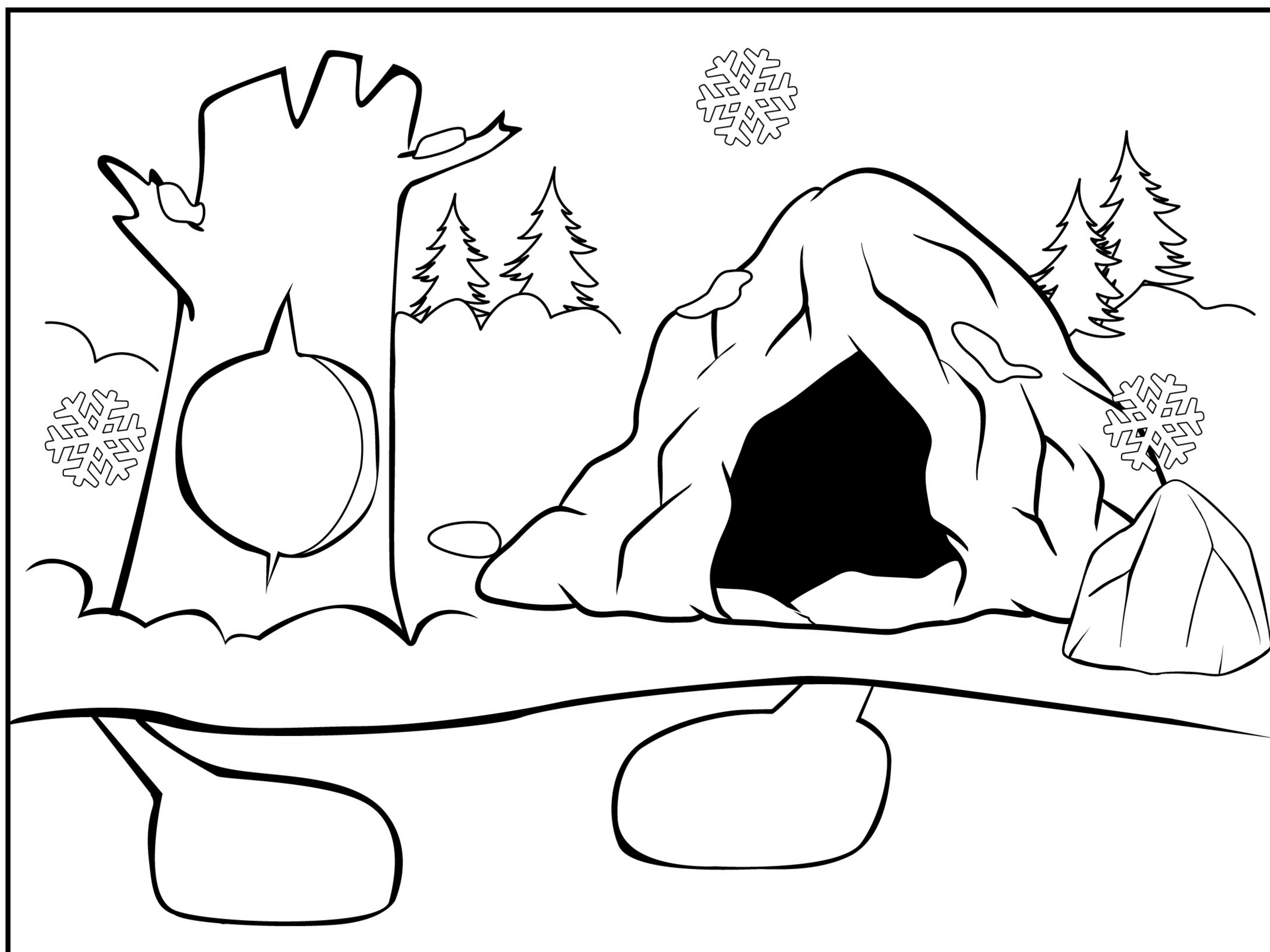
beaver

frog

Name: _____

Animal Hibernation

Directions: It's time for the animals to hibernate for winter. Color the pictures.
Cut and paste the each animal in its own resting spot.



Name: _____

Directions: Cut, sort and paste the pictures under the correct heading.
Write the animals below.

Animals that hibernate.

--	--	--	--

bear

skunk

hedgehog

chipmunk

Animals that don't hibernate.

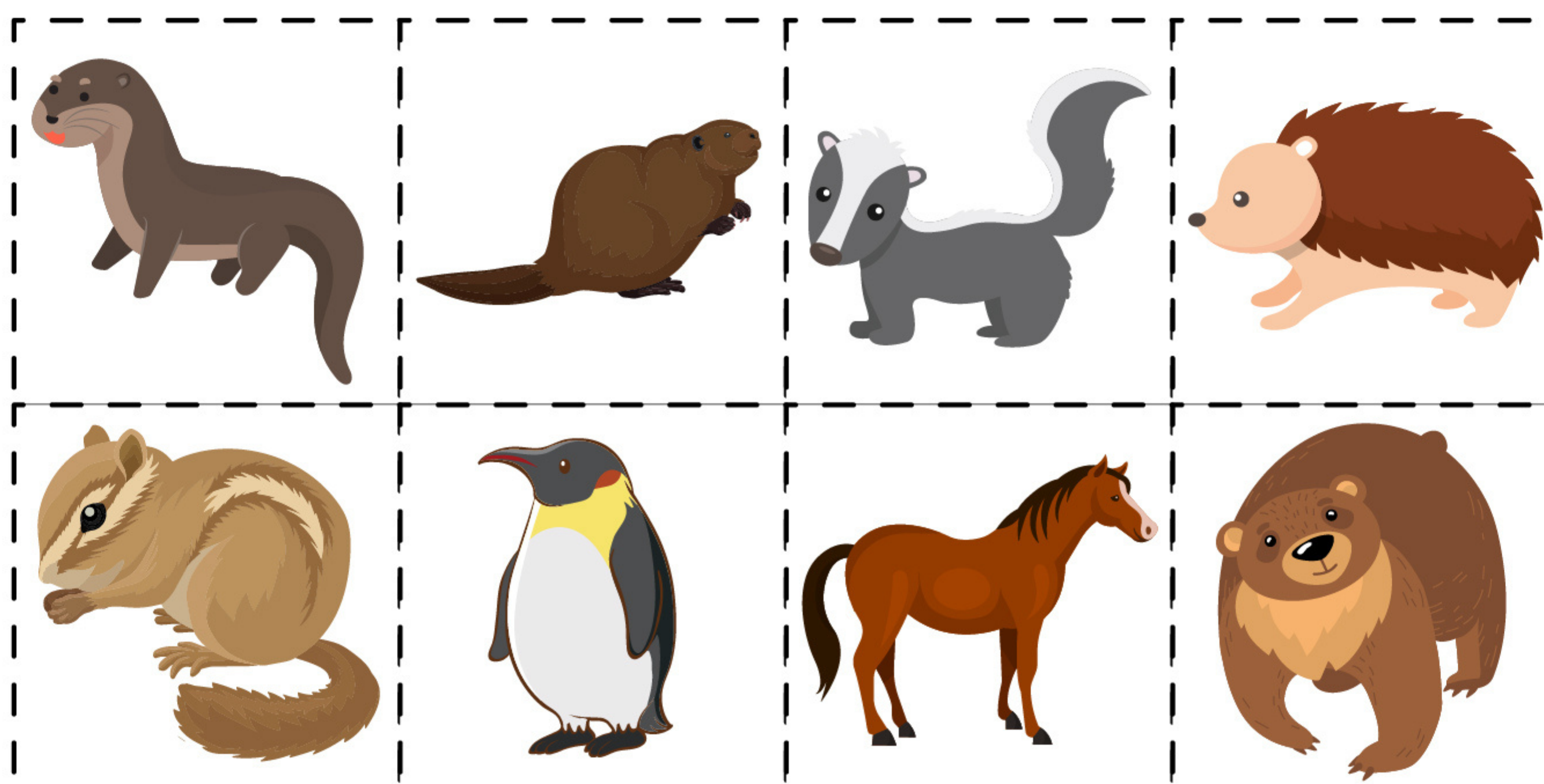
--	--	--	--

otter

horse

penguin

beaver



Name: _____



Hibernation Crossword Puzzle

Directions: Look for the animals that hibernate.

H	A	N	S	S	R	N	O	O	C	A	R
E	T	E	E	T	N	U	A	R	H	Y	B
D	O	V	K	A	B	E	R	A	I	R	I
G	O	E	A	B	E	A	R	U	P	Y	S
E	R	R	N	B	S	H	T	O	M	H	E
H	A	J	S	N	A	I	L	B	U	S	F
O	G	A	R	T	E	R	R	E	M	N	R
G	N	C	L	A	I	R	I	F	U	B	O
R	A	R	J	E	C	R	L	E	N	U	G
S	K	U	N	K	H	R	I	S	K	R	S
I	S	Q	U	I	R	R	E	L	R	R	E
B	U	M	B	L	E	B	E	E	S	R	Y
T	U	R	T	L	E	S	J	U	N	E	S
C	U	D	E	C	E	M	B	E	R	Y	A

Hedgehog

Chipmunk

Bumblebees

Moths

Skunk

Squirrel

Bats

Frogs

Bear

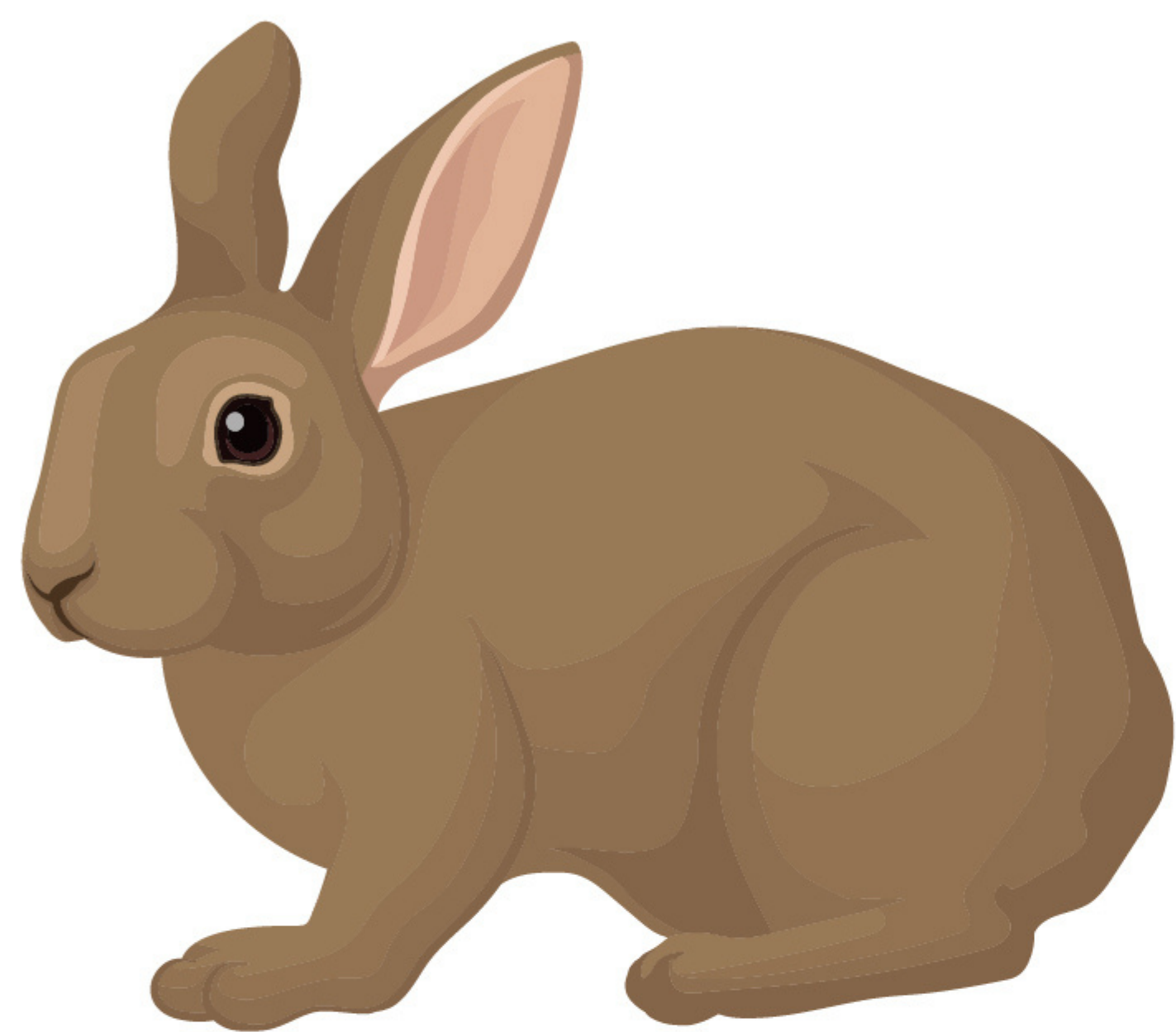
Raccoon

Turtles

Snakes

Snail

Kangaroo



Rabbit



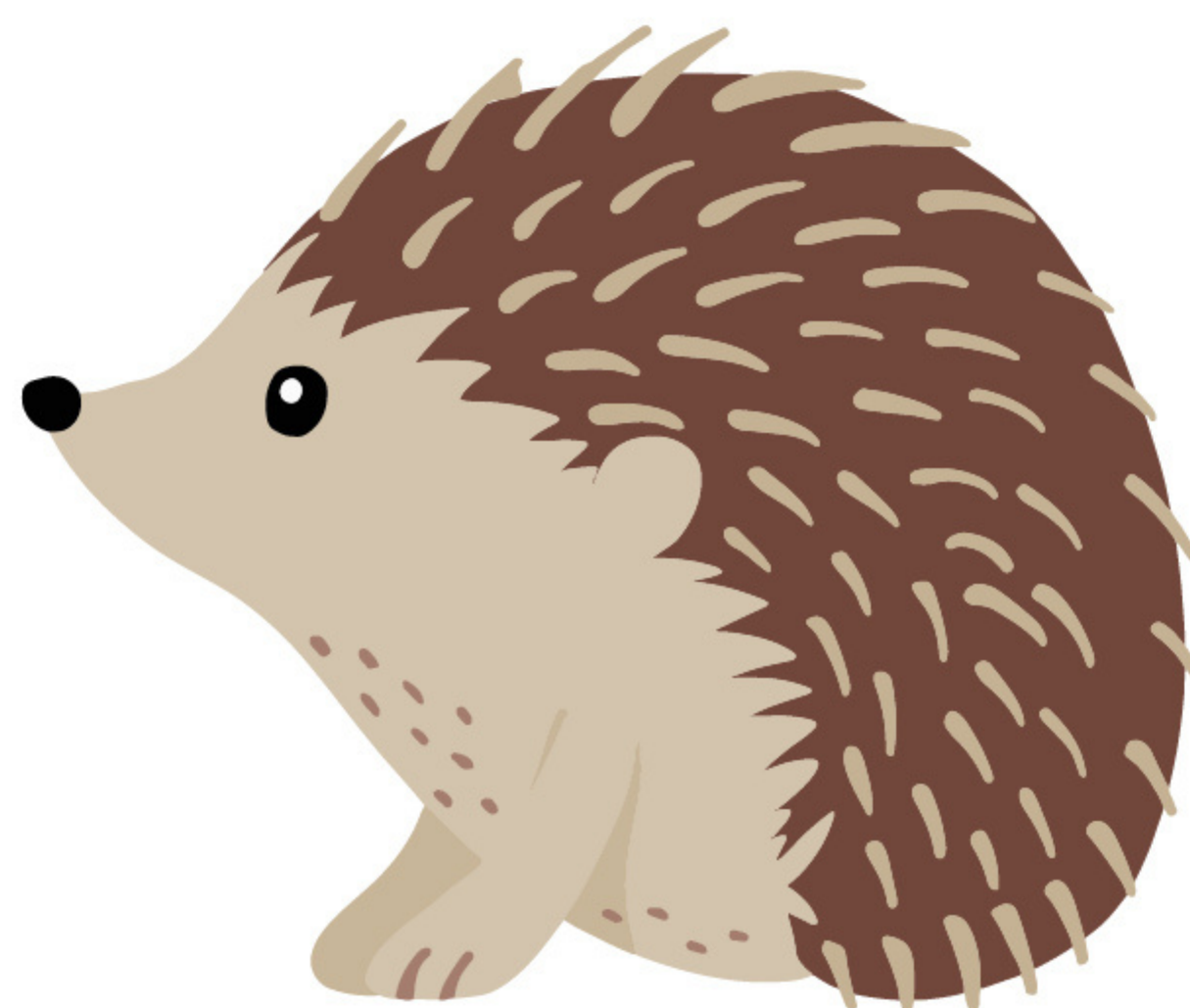
Squirrel



Bear



Chipmunk



Hedgehog



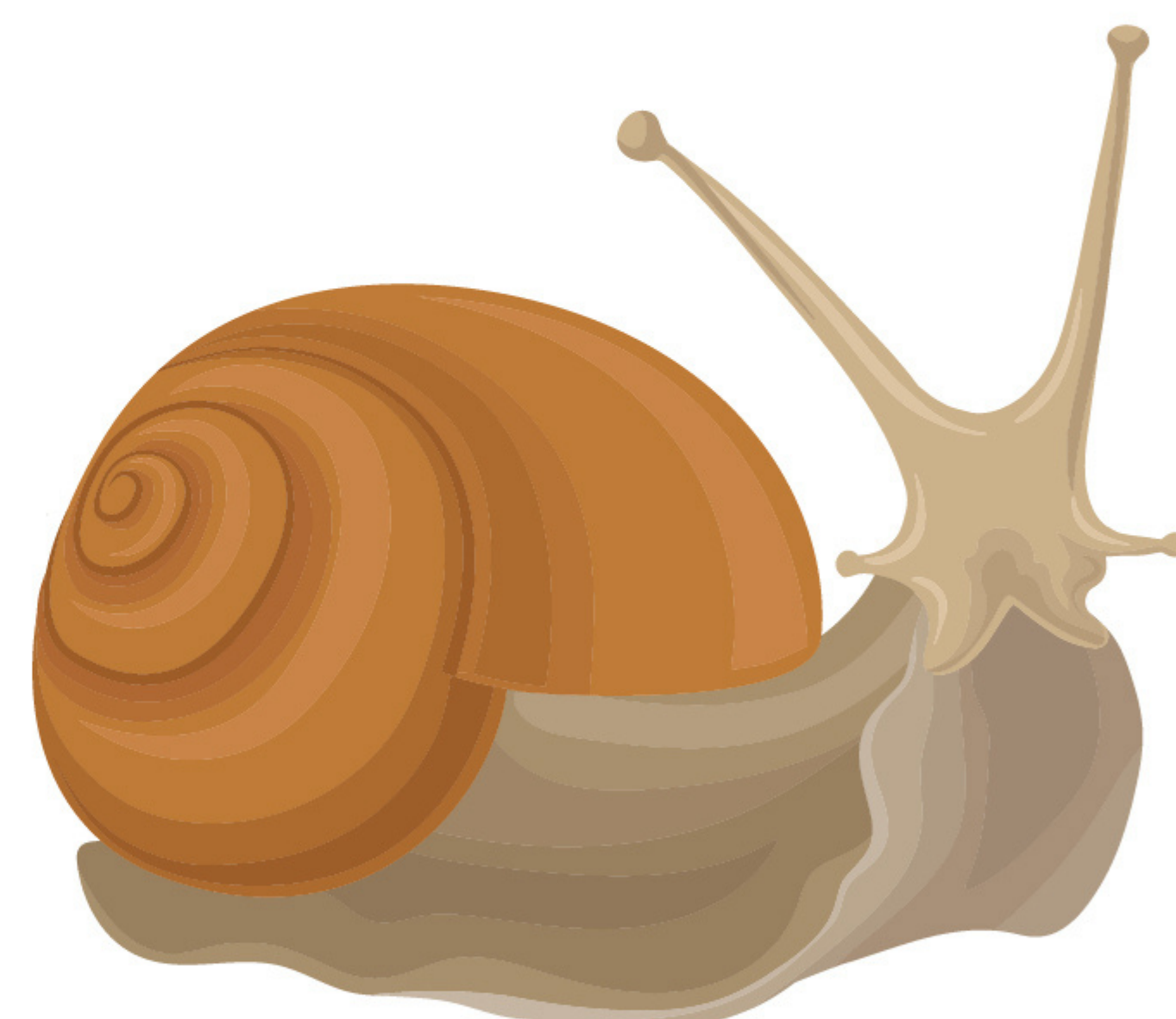
Skunk



Frog



Raccoon



Snail



Fox



Lemur



Gecko



Bumblebee



Kangaroo



Moth



Turtle



Snake



Bat